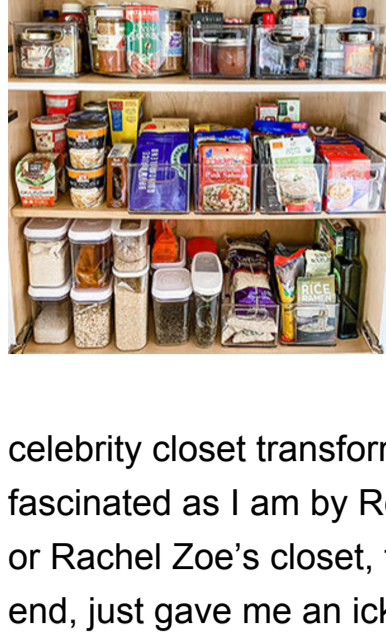


An Excruciatingly Opinionated Guide to the Connecticut Shoreline

SHOP CALENDAR EAT DISCOVER TRAVEL TOWN GUIDES



Have you watched the new series on Netflix, *The Home Edit*? These two gals invented the ROYGBIV style of organizing and have become wildly insta-famous for their

celebrity closet transformations. As fascinated as I am by Reese Witherspoon's or Rachel Zoe's closet, the show, in the end, just gave me an icky feeling. If it takes four people several days to reorganize your wardrobe, you've just got WAY. TOO. MUCH. STUFF. How can you possibly wear hundreds of pairs of shoes (and in Rachel Zoe's case, how many Kelly bags can you tote??). Given our current situation, it seems a little tone-deaf. However, the big takeaway for me is their mantra: Edit, Categorize, Contain, Maintain, and I applied it to my pantry this weekend with satisfying results!

Love, Erica

The Williams School
Independent • College Preparatory • Day School
on the campus of Connecticut College | New London
GRADES 6-12

Join us on our patio!

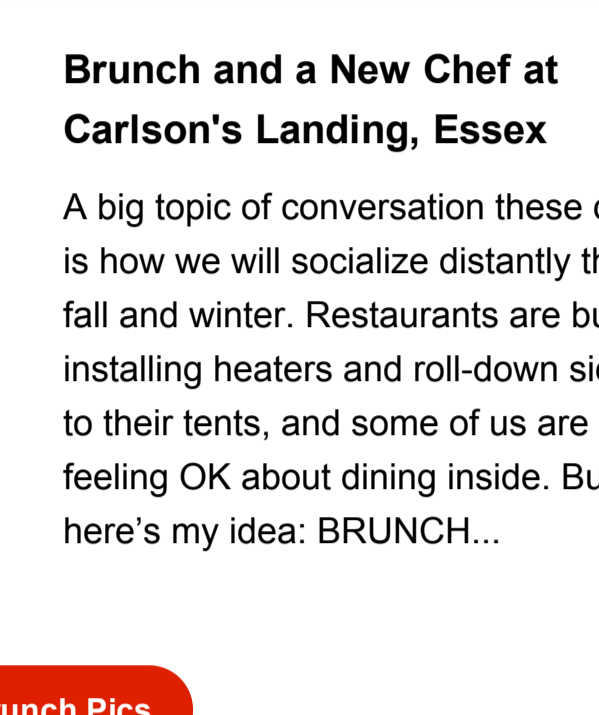
ADMISSION INFO SESSIONS

October 14
November 10
5:30 PM

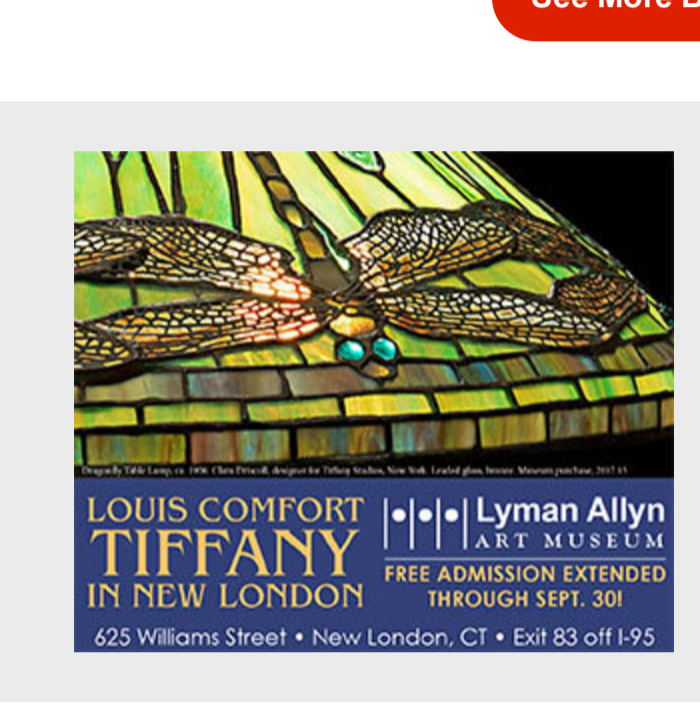
Academic Excellence in a new era

Register Online!

P.S. If you received this from a friend and would like your own weekly guide to the best of the Shoreline, [subscribe here](#).

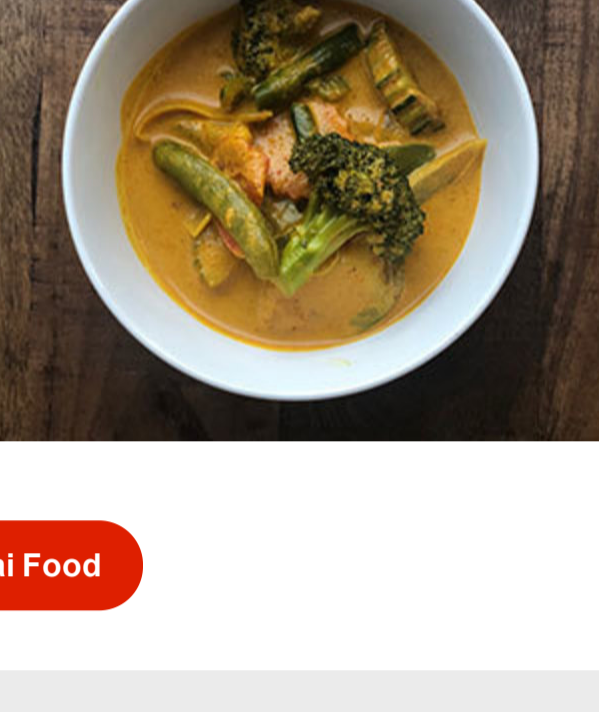
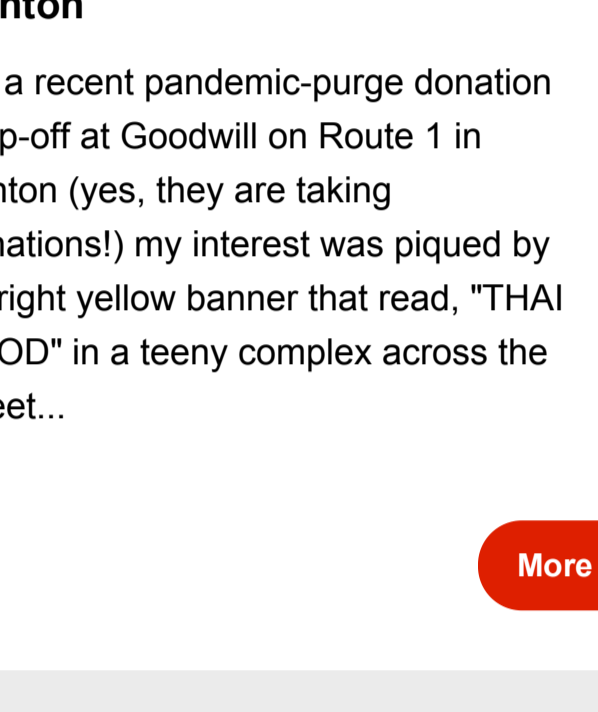


Brunch and a New Chef at Carlson's Landing, Essex



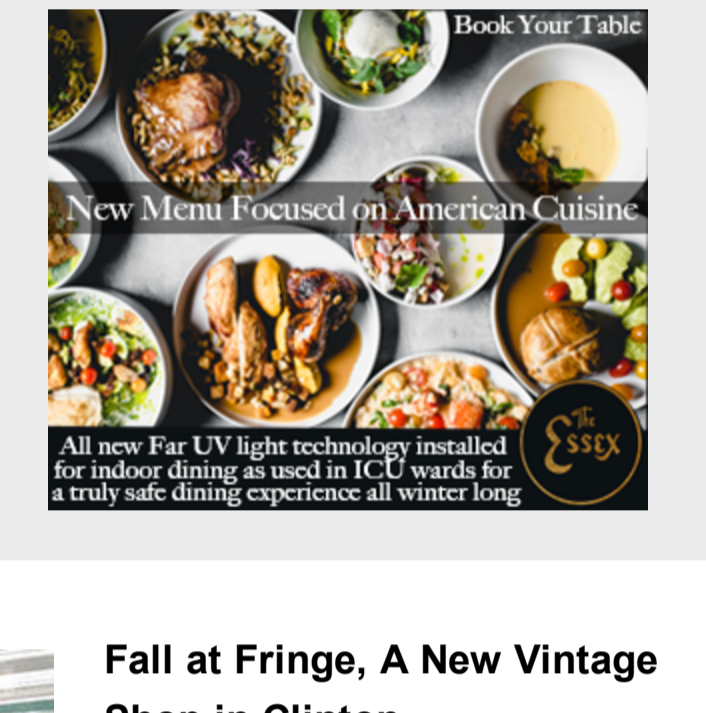
A big topic of conversation these days is how we will socialize distantly this fall and winter. Restaurants are busy installing heaters and roll-down sides to their tents, and some of us are feeling OK about dining inside. But here's my idea: BRUNCH...

[See More Brunch Pics](#)

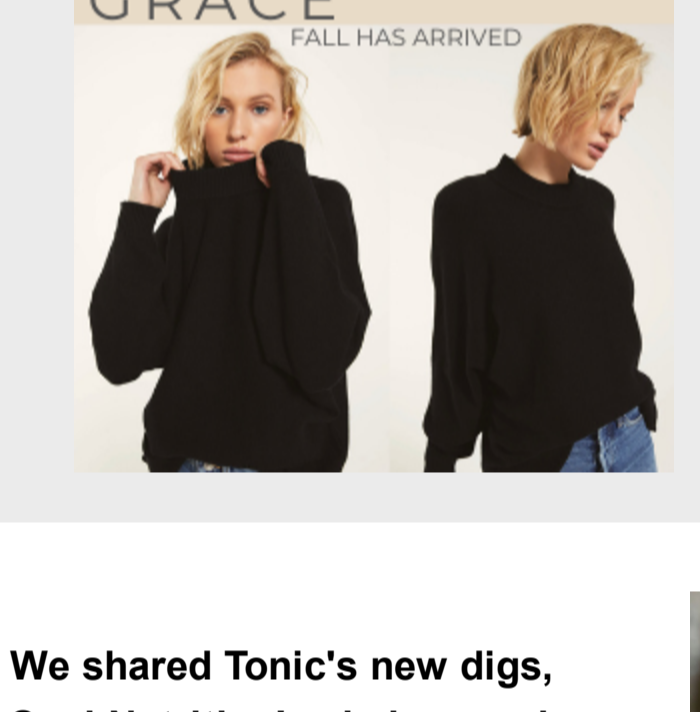
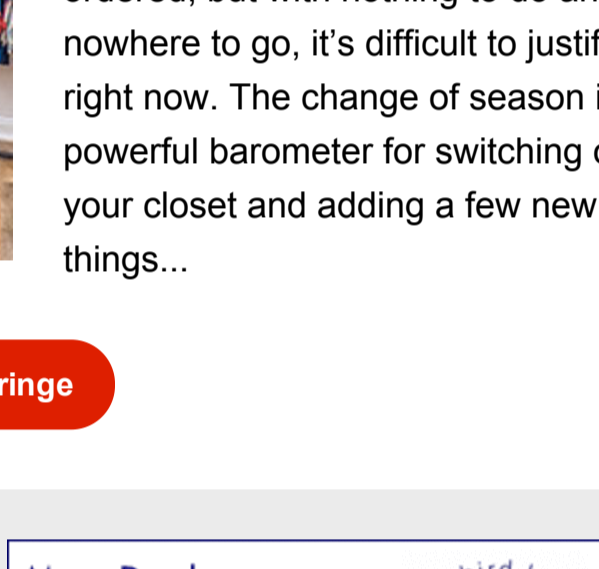
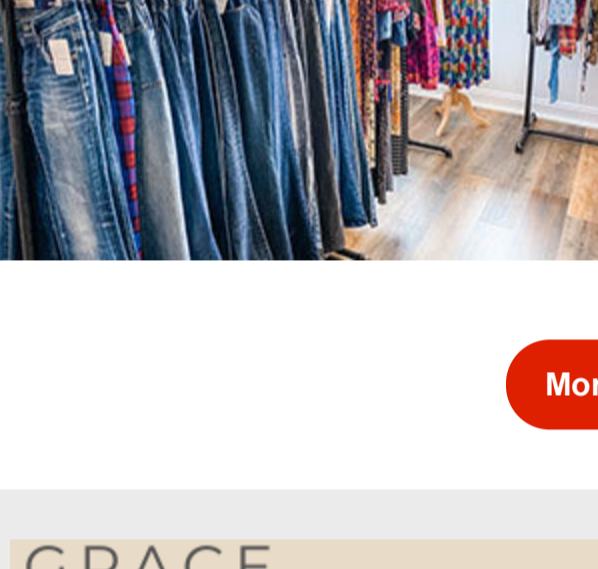


Authentic Eats at Land of Thai in Clinton

On a recent pandemic-purge donation drop-off at Goodwill on Route 1 in Clinton (yes, they are taking donations!) my interest was piqued by a bright yellow banner that read, "THAI FOOD" in a teeny complex across the street...



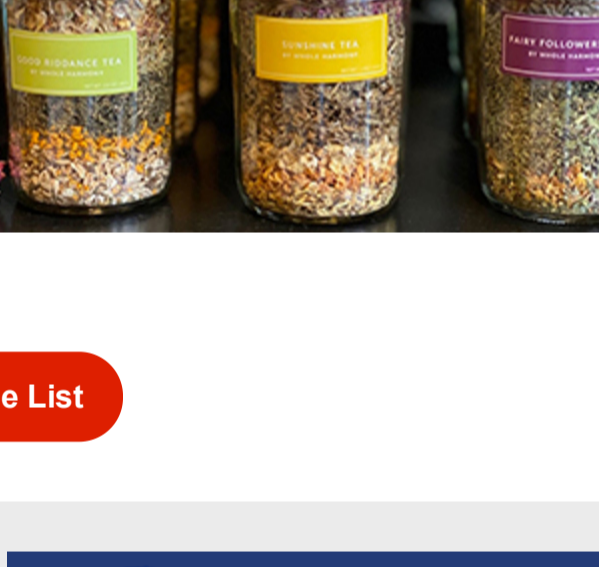
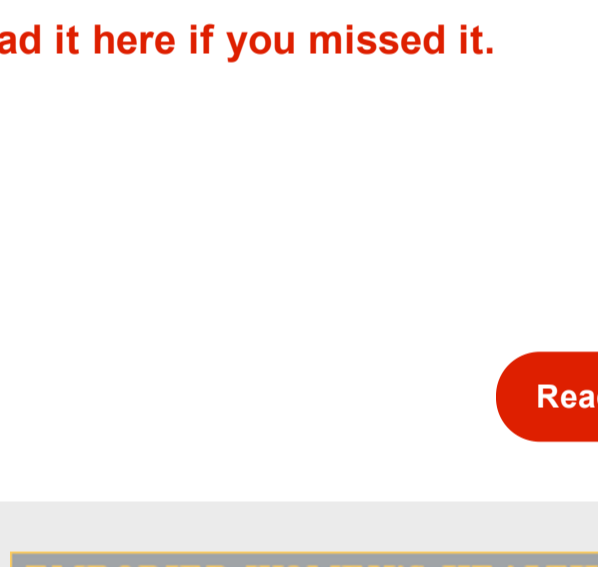
[More Thai Food](#)



Fall at Fringe, A New Vintage Shop in Clinton

There's no denying that retail therapy is sometimes just what the doctor ordered, but with nothing to do and nowhere to go, it's difficult to justify right now. The change of season is a powerful barometer for switching out your closet and adding a few new things...

[More Fringe](#)

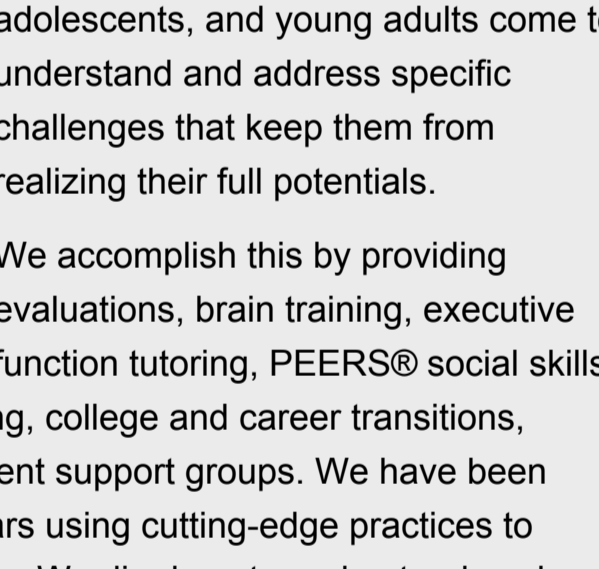


We shared Tonic's new digs, Soul Nutrition's shakes, and a fun food shop in Higganum on last week's list.

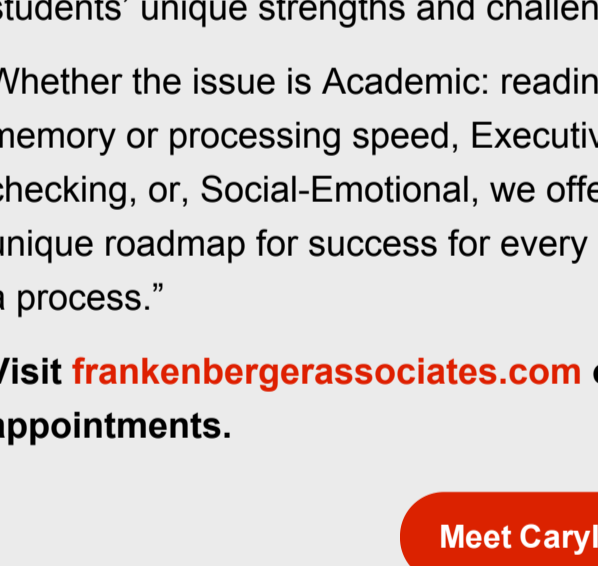
[Read it here if you missed it.](#)



[Read the List](#)



Sponsored Story



Frankenberger Associates Learning Solutions Center in Branford is a place where children, adolescents, and young adults come to understand and address specific challenges that keep them from realizing their full potentials.

We accomplish this by providing evaluations, training, executive function tutoring, PEERS® social skills

groups and one-on-one social skills training, college and career transitions, counseling, occupational therapy, and parent support groups. We have been working with families for more than 30 years using cutting-edge practices to identify and address roadblocks to learning. We dig deep to understand each students' unique strengths and challenges.

Whether the issue is Academic: reading, writing or math, Cognitive: attention, memory or processing speed, Executive: planning, organizing, initiating, checking, or, Social-Emotional, we offer programs and guidance that create a unique roadmap for success for every student. "Success doesn't just happen, it's a process."

Visit frankenbergerassociates.com or call 203.481.8476 for inquiries or appointments.

[Meet Cary! Frankenberger](#)

From The E List Events Calendar

CT Ladyfest 2020: A Virtual Gathering of Creative Ladies, 10/3

Join me and a roster of women creatives and entrepreneurs for this inaugural, inspirational virtual event. [Read more...](#)

20% Off Everything at The Madison Stock Exchange!, 9/26 - 9/28

Celebrate The Madison Stock Exchange's 15th Anniversary with 20% off everything including furniture, home decor, Chalk Paint® by Annie Sloan, Voluspa candles and more! [Read more...](#)

The THRIVEcircle™ - A Group Coaching Circle for Women That Want to Build Their Dream and Love Their Life, Begins Week of 10/5

If you are committed to your personal and professional growth and you'd like to be with a group of women that are dedicated to helping you thrive, then join The THRIVEcircle™. In this 6-months together you'll explore the top habits of thriving and successful women and you'll benefit from loads of coaching, support, accountability, and connection. [Read more...](#)

Complimentary Simon Pearce Engraving Event at Willow & Birch, Madison, 9/20 - 10/3

Make it personal! Complimentary engraving on Simon Pearce purchases at Willow & Birch. [Read more...](#)

Wondering what else is open out there? Find alfresco dining, curbside pickup, outdoor activities, and more on The E List events calendar:

[Browse the Calendar](#)

Have an event coming up, virtual or otherwise, and want to get your word out to our 25k subscribers? Click here to add your event listing:

[Submit Your Event](#)

CONNECT



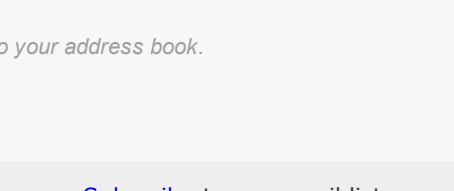
ABOUT ERICA / ASK ERICA / OUR WEBSITE / ADVERTISE

Don't miss a list, sign up here:

[SUBSCRIBE](#)

VISIT OUR CLOTHING SHOP!
1 North Main Street
Chester, CT
860.322.3388

SHARE



Manage your preferences | Opt out using TrueRemove™
Got this as a forward? Sign up to receive our future emails.
View this email online.

PO Box 5
Old Lyme, CT | 06371 US

This email was sent to .
To continue receiving our emails, add us to your address book.

emma

[Subscribe](#) to our email list.